

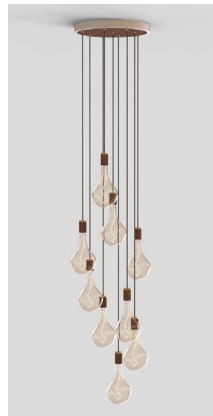
# WALNUT NINE PENDANT WITH VORONOI II (US)

*The Walnut Nine Pendant by Tala is an impressive lighting system designed for maximum impact.*

*Housed in a circular metal canopy in a white finish, a broad Walnut disc and nine Brass grips create a practical yet attractive base for nine Walnut pendants to hang at varying lengths. Paired with the iconic Voronoi II LED bulb.*

## LAMP

**Shape:** Custom  
**Bulb Materials:** Borosilicate Glass and Brass Cap  
**Bulb Finish:** Iron tinted  
**Beam angle:** 360°  
**Base:** E26  
**Working temperature:** -5°C to 40°C  
**Warm up time:** Instant  
**Warranty:** 3 years  
**Input Voltage:** 110-120V  
**Fixture Materials:**  
 White Powder Coated Steel, Walnut Veneer, Walnut & Glass



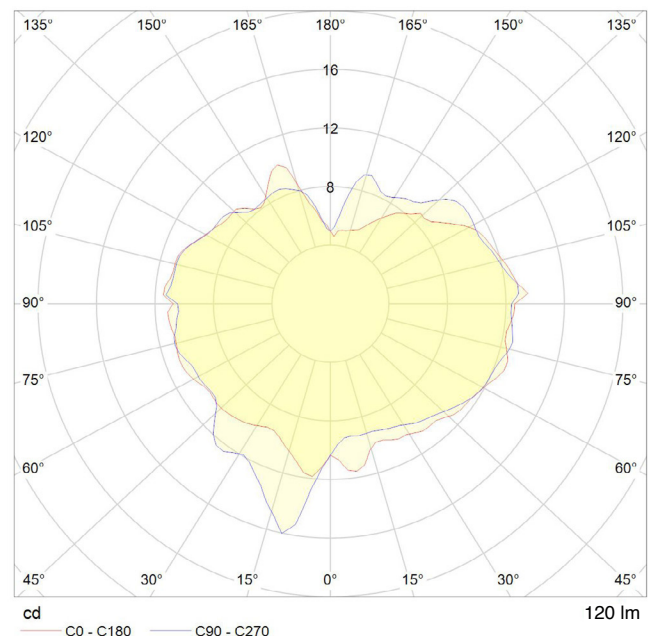
## DIMENSIONS:

**BULB:**  
 6.5 x 11.8in (Width x Length)  
**FIXTURE:**  
 2 x 3.5in (Width x Length)  
**LARGE CANOPY:**  
 20 x 1.97in (Width x Length)  
**CABLE:**  
 16.4ft (Length)

## PERFORMANCE (PER BULB)

CRI (colour rendering index)	95
Lamp lumen output	120lm
Flicker	<5%
Lumens per circuit watt (LM/W)	40lm/W
Lifetime (TM-21) (hours)	15,000hrs
Colour Temperature	2200K
Power factor	0.9

## POLAR DIAGRAM



## DIMMING

**Dimmable:** Yes, in-line dimmer included.  
**Dimming type:** Trailing edge

SKU CODE: CP-WHT-SET-NON-WP-02-US

IES/LDT FILE:

Available upon request.

EAN CODE: 5060400158232

CANOPY: IP20	BULBS: IP54
-----------------	----------------

